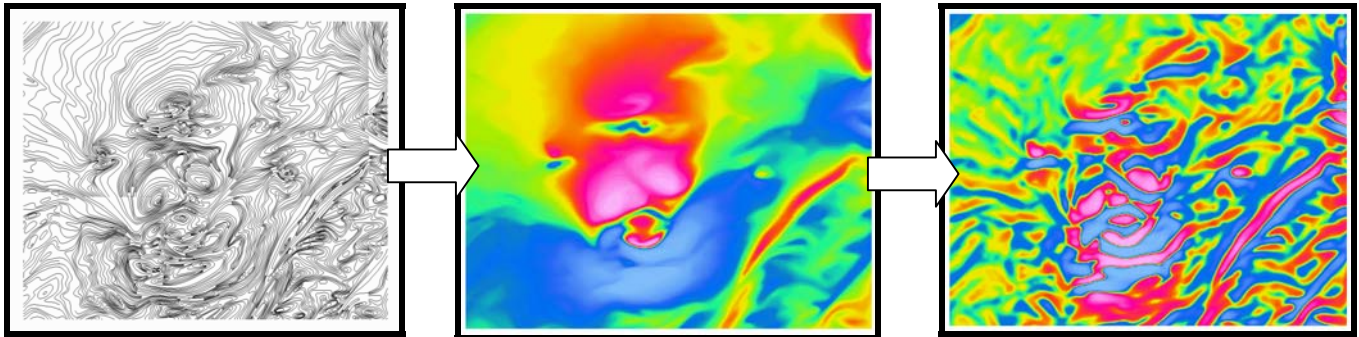


# Convert Manual Contours to Digital Data

## *A specialized technique to convert manual contours into high-quality digital data*

Many excellent quality geophysical surveys were flown prior to the digital era and were compiled manually. These include regional surveys, often funded by government agencies, as well as many magnetic/electromagnetic/spectrometer surveys, privately acquired for mineral and oil exploration. The quality and availability of this data is often overlooked due to the fact that is not amenable for use with modern, computerized, analysis and presentation techniques. A service to generate high resolution digital gridded and profile data from manually drawn contour maps has been developed by Scott Hogg and Associates. The process incorporates digital scanning and line-following tools together with specialized gridding techniques that preserve all of the detail available.



The above illustration is from a regional Brazilian survey in the State of Goias. The manual contour map is presented at the far left and a colour presentation of the recovered digital magnetic grid is presented in the centre. To the right is a calculated residual magnetic component that reveals the detail of new information that can be resolved from a traditional analog map.

Digital grids from some surveys in Brazil are currently available under license agreement. If you have historic data over an area of interest or are interested in what coverage may be available contact Scott Hogg and Associates Ltd. for a quotation on our digital conversion services.



**Scott Hogg & Associates Ltd.**  
Custom Geophysical Services

85 Curlew Drive, Suite 102,  
Toronto, Ontario, Canada, M3A 2P8  
(416) 444-8245 Phone (416) 444-4409 Fax  
[www.shageophysics.com](http://www.shageophysics.com)