

Exploring for Kimberlite, Gold or Base Metals ?
Need the highest resolution magnetic survey possible ?
Check out the Heli-GT System !

Exceptional Technology, Service and Value

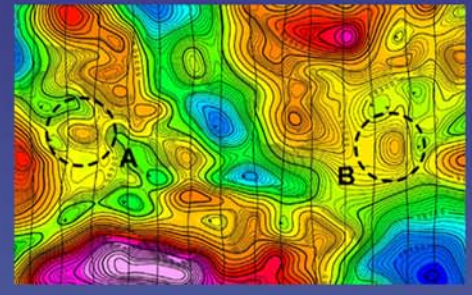
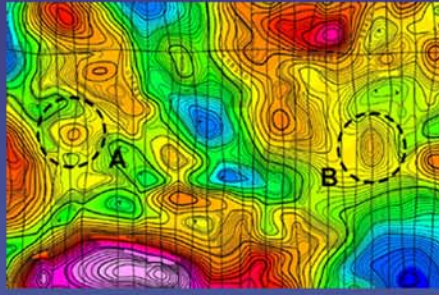
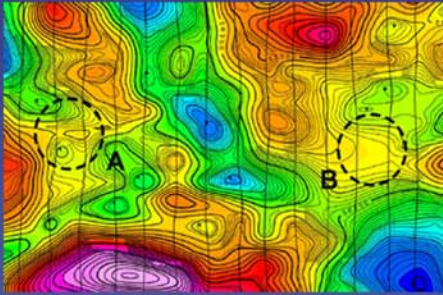


See between the lines with Heli-GT

Are you missing detail between flight lines?

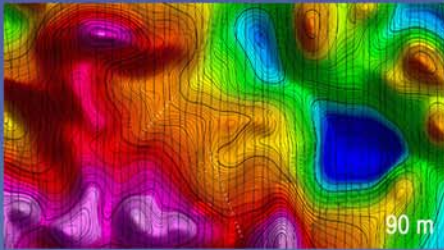
You can fly infill and double your cost

OR You can use the GT-MAG system and see between the lines

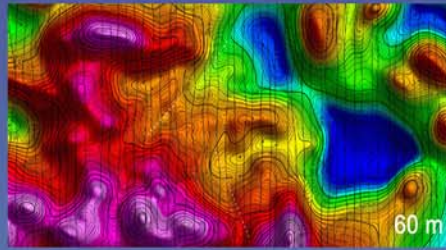


Get down to the Detail

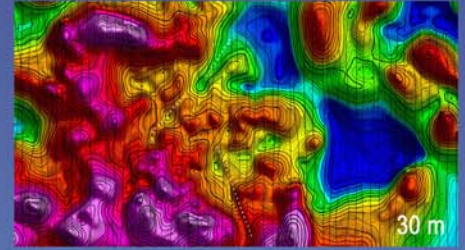
90 m



60 m



30 m



Technical Highlights



The towed bird is the entire survey system.
It contains 4 cesium sensors, radar altimeter, GPS,
3-axis fluxgate magnetometer and AHS to measure pitch, roll and yaw.

Total system weight is less than 250 lb.
No racks or helicopter modifications are required.

Equipment can be removed or re-installed in 10 minutes to
allow occasional alternate use of helicopter.

The system measures Total Magnetic Field plus 3 Geo-Reference
magnetic gradients G-East, G-North and G-vertical, independent of
bird orientation.



For more information or a quotation contact:
Scott Hogg & Associates Ltd.
(416) 444 8245 or shageophysics.com