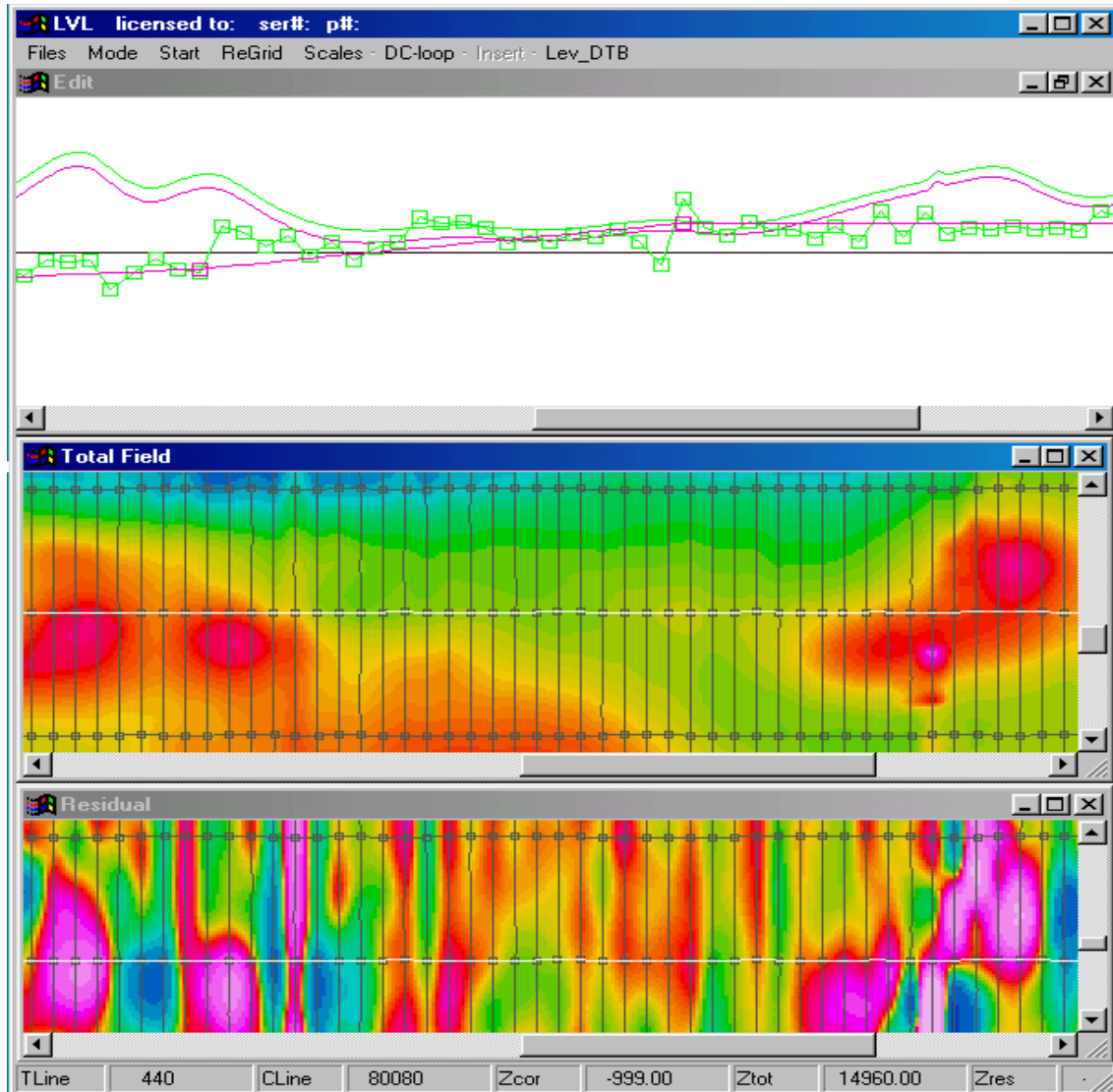


LVL-WIN: Interactive Magnetic Leveling System

Control Line Network Analysis + Integrated Micro-leveling

- Linked scroll windows to move throughout the project.
- View Corrected Total Field plus micro-level residual in real time.
- Point and Click Interaction with lines and intersections.
- User specified map orientation for convenient horizontal or vertical view of lines.



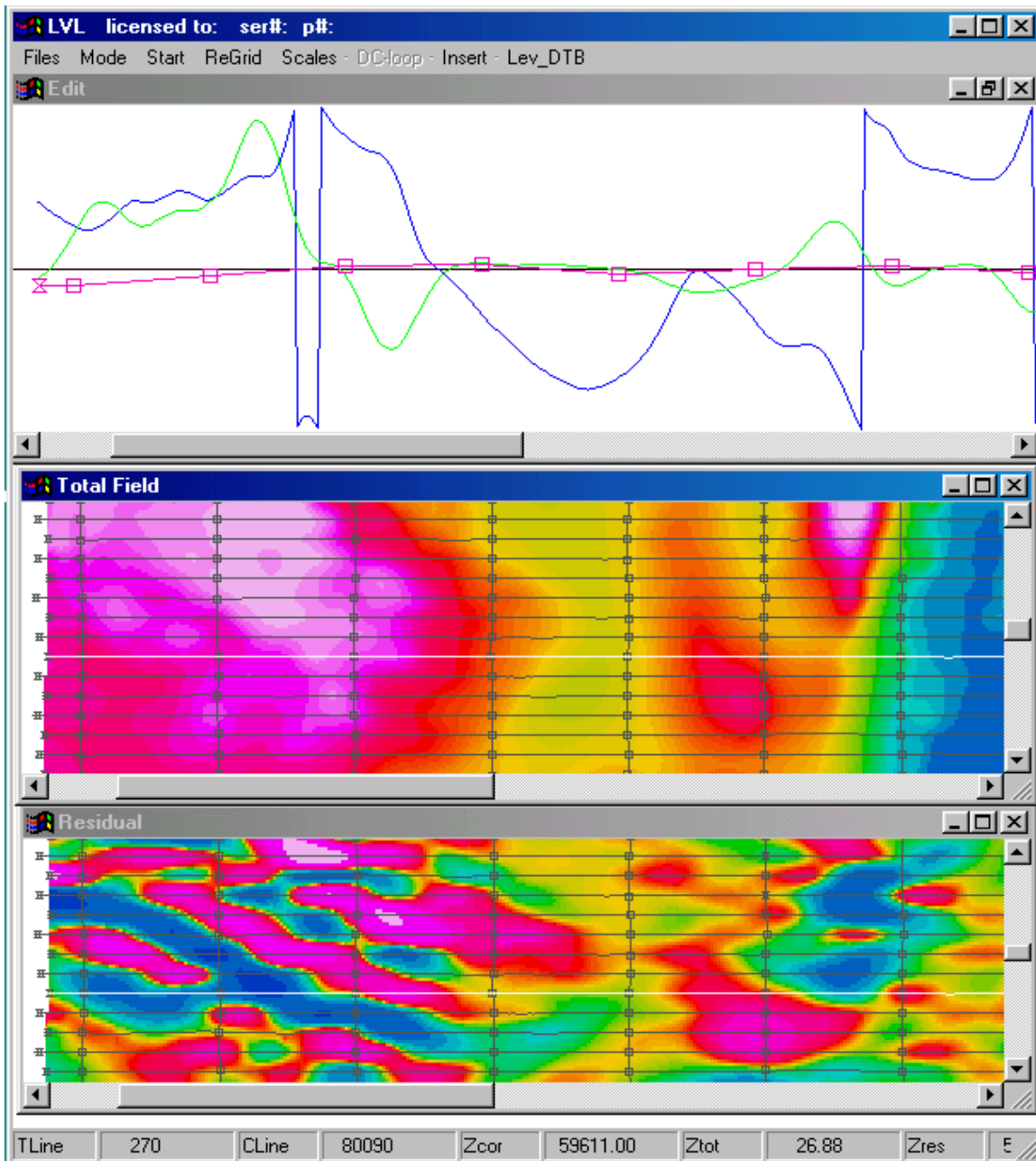
Control Line Corrections include an auto-determined DC-shift plus a user defined segmented linear sloping datum. In the Control Line profile window illustrated above; the raw magnetic data is presented as a green profile and the intersection differences as green rectangles. The red boxes and their connecting linear red line is a user-specified control correction that reduces the difference between corrected control values and raw traverse line values.



Scott Hogg & Associates Ltd.
Custom Geophysical Services

85 Curlew Drive, Suite 102,
Toronto, Ontario, Canada, M3A 2P8
(416) 444-8245 Phone (416) 444-4409 Fax
www.shageophysics.com

Once the appropriate correction has been established for the control lines the presentation is rotated for convenient analysis of the traverse lines. In the Traverse Line profile window below, the magnetic profile is presented in blue and the difference between raw traverse value and corrected control line is presented as red rectangles. A suggested micro-level correction is presented for general reference as a green profile. Intersections may be ignored in active unreliable areas or they may be overridden and converted to user specified values or in an appropriately quiet area set to track the indicated micro-level correction. The Total Field and Micro-level residual window continuously updated the results and corrections in effect.



Scott Hogg & Associates Ltd.
Custom Geophysical Services

85 Curlew Drive, Suite 102,
Toronto, Ontario, Canada, M3A 2P8
(416) 444-8245 Phone (416) 444-4409 Fax
www.shageophysics.com